

TABLE AND LOADING MOVEMENT OF PTFE CUM POT BEARINGS

BEARING IDENTIFICATION MARK/NUMBER	REF. DWG. NO.	DESIGN LOAD (TON)																DISPLACEMENT(mm)								ROTATION (RAD)				QTY					
		SLS					ULS(NORMAL)				ULS(WIND)				ULS(SEISMIC LONG.)				ULS (SEISMIC TRANS.)				SLS				ULS				SLS				
		VERTICAL			HORIZONTAL		VERTICAL		HORIZONTAL		VERTICAL		HORIZONTAL		VERTICAL		HORIZONTAL		VERTICAL		HORIZONTAL		IRREVERSIBLE		REVERSIBLE		IRREVERSIBLE		REVERSIBLE		IRREVERSIBLE		REVERSIBLE		
		MAX.	PERM.	MIN.	TRANS.	LONG.	MAX.	MIN.	TRANS.	LONG.	MAX.	MIN.	TRANS.	LONG.	MAX.	MIN.	TRANS.	LONG.	MAX.	MIN.	TRANS.	LONG.	TRANS.	LONG.	TRANS.	LONG.	TRANS.	LONG.	TRANS.		LONG.	TRANS.	LONG.		
FIX		260	175	167	26	41	364	224	37	72	388	200	39	72	286	216	33	50	286	216	109	33	0	0	0	0	0	0	0	0	0.011	0.011	0.011	0.011	1
		305	215	148	31	43	425	200	43	75	449	176	45	75	337	192	34	66	337	192	78	39	0	0	0	0	0	0	0	0	0.012	0.012	0.012	0.012	1
		305	215	148	31	43	425	200	43	75	449	176	45	75	337	192	34	66	337	192	78	39	0	0	0	0	0	0	0	0	0.012	0.012	0.012	0.012	1
		285	190	197	29	31	404	269	41	54	427	247	43	54	315	261	31	46	315	261	57	31	0	0	0	0	0	0	0	0	0.012	0.012	0.012	0.012	2

NOTES:

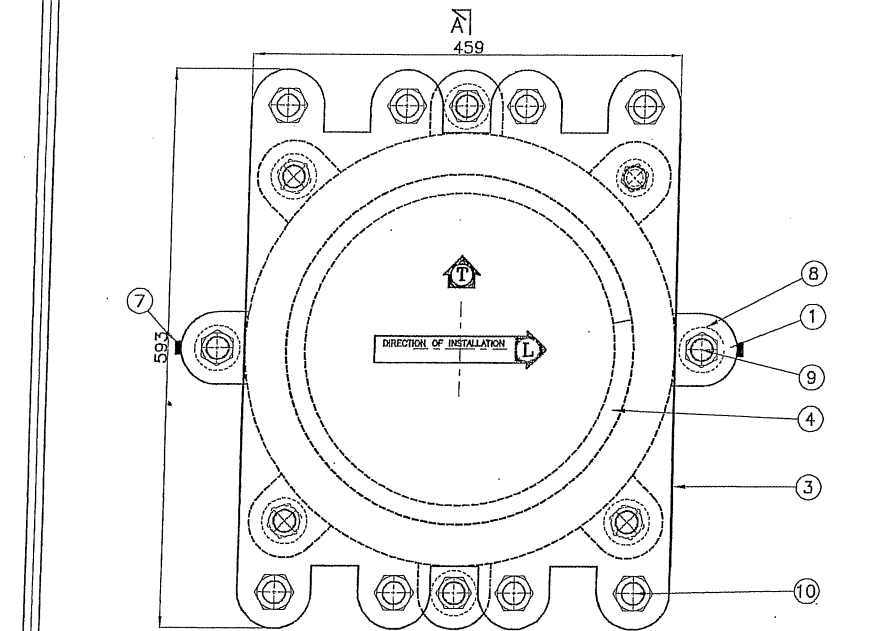
- 1 ACCEPTANCE SPECIFICATION AS PER IRC 83 PART III 2018, CL 7.1.
- 2 INSPECTION PROCEDURE AS PER CLAUSES 7.2 INSPECTION AND TESTING OF BEARING AS PER CLAUSE 7.2.1 TYPE TEST, WHICH INCLUDES INSPECTION & TESTING AS PER CLAUSES 7.4.2. AND 7.4.3. SHALL BE CARRIED OUT ON AT LEAST ONE BEARING OF EACH TYPE AND LOAD CAPACITY SELECTED AT RANDOM.
- 3 ROUTINE TEST AS PER CLAUSE 7.2.1.2.
- 4 RAW MATERIAL TEST
-RAW MATERIAL INSPECTION
-INSPECTION AND TESTING OF FINISHED BEARINGS
- 5 PROCESS INSPECTION AS PER CLAUSE 7.4.2.
- 6 INSPECTION OF FINISHED BEARINGS AS PER CLAUSE 7.4.3.1.
- 7 LOAD TEST ON BEARING AS PER CLAUSE 7.4.3.3.
-PROOF LOAD TEST AS PER CLAUSE 7.4.3.3.1.
-FRICTION TEST AS PER CLAUSE 7.4.3.3.2.
-ROTATION TEST AS PER CLAUSE 7.4.3.3.3.
- 8 VISUAL INSPECTION OF BEARING AFTER LOAD TEST AS PER CLAUSE 7.4.3.4.
- 9 TESTING OF PIN AND METALIC BEARING AS PER CLAUSE 7.4.3.5.
- 10 MANUFACTURING AS PER CLAUSE 6.1
MANUFACTURING TOLERANCES AS PER CLAUSE 6.1.1 TO 6.1.4.5.2
- 11 OVER ALL HEIGHT OF BEARING : 112 mm



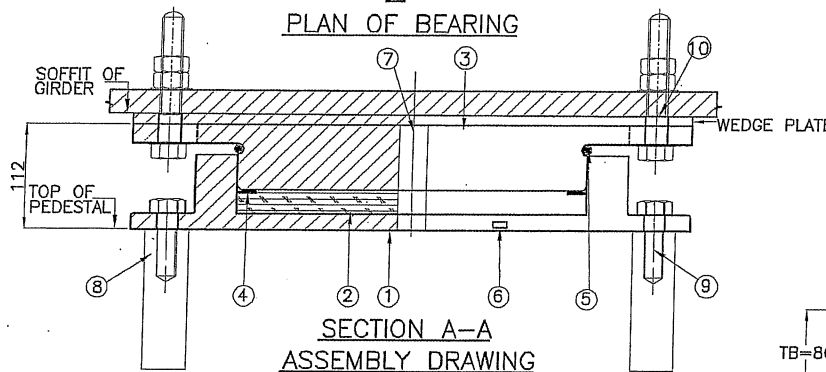
BBR (INDIA) PVT. LTD. BANGALORE

BILL OF QUANTITIES

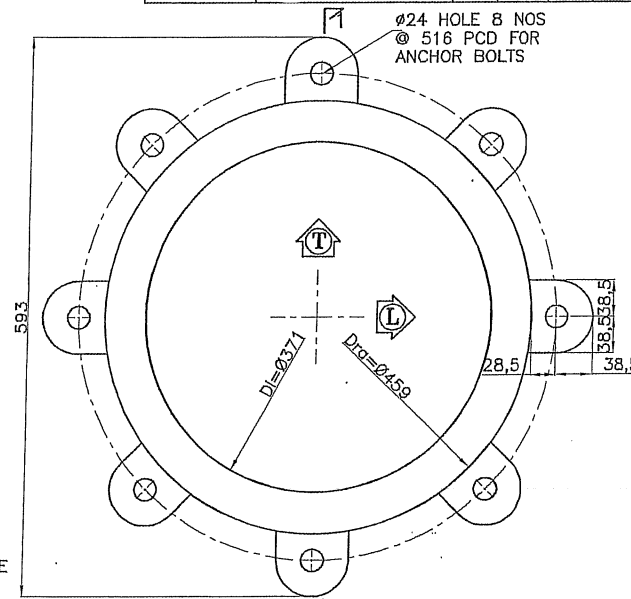
POS.NO	DESCRIPTION	MATERIAL SPECIFICATION	QTY
10	CONNECTING BOLT-POT COVER	M22x130 Long (Grade 8.8)	8
9	ANCHOR BOLT-POT BOTTOM	M22x70 Long (Grade 8.8)	8
8	ANCHOR SLEEVE	E250 IS2062/EN8	8
7	TRANSPORTATION PL.	30x10mm THK. MS PL.	2
6	NAME PLATE	-	1
5	DUST SEAL	ELASTOMER	1
4	SEAL RING	BRASS RING 10x1.5mm THK.	1 SET= 2 NOS
3	POT COVER	CAST STEEL-IS 1030-340 570W	1
2	ELASTOMER	IRC 83 PART III 2018	1
1	POT BOTTOM	CAST STEEL-IS 1030-340 570W	1



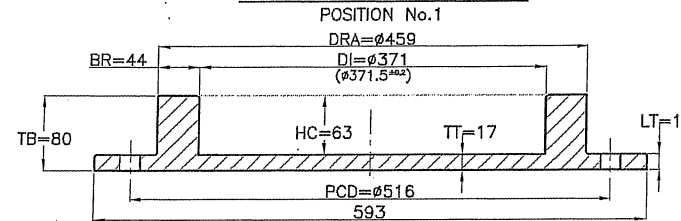
PLAN OF BEARING



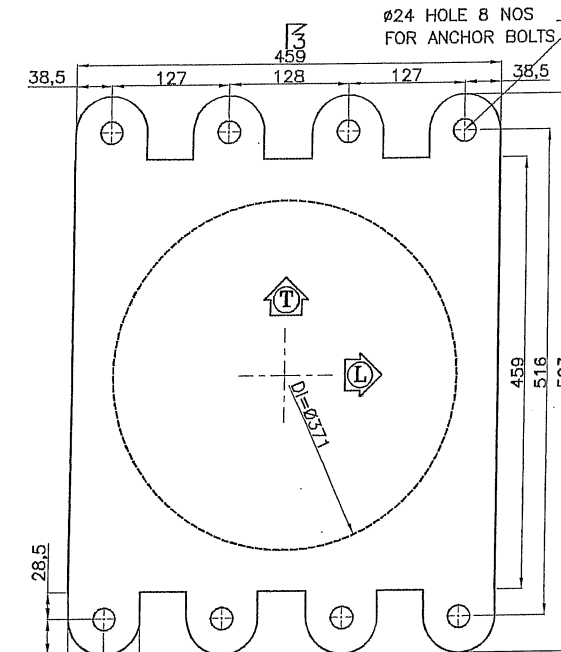
SECTION A-A
ASSEMBLY DRAWING



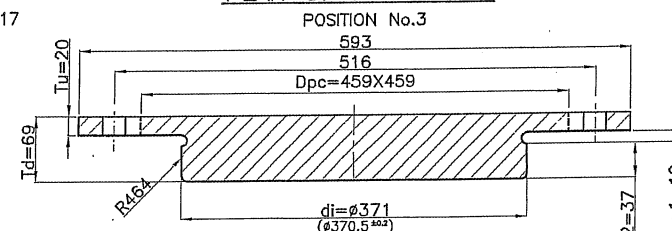
PLAN OF POT BOTTOM



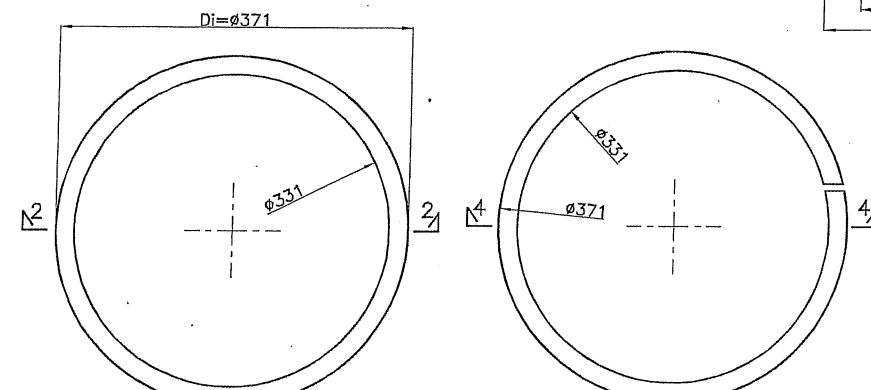
SECTION 1-1



PLAN OF POT COVER

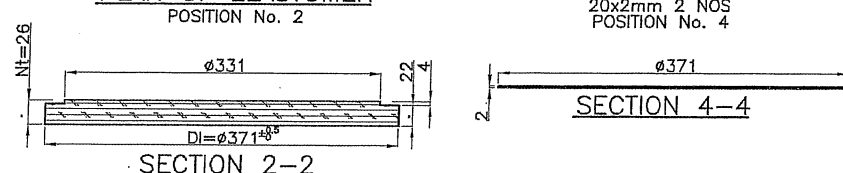


SECTION 3-3
POSITION No.3



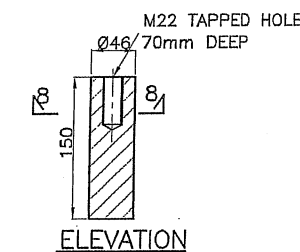
PLAN OF ELASTOMER

BRASS SEAL RING



SECTION 2-2

SECTION 4-4



ELEVATION

SECTION 8-8
ANCHOR SLEEVE
POSITION No. 8

- NOTES:
1. ALL DIMENSIONS ARE IN MM.
 2. DO NOT SCALE THE DRAWING. FOLLOW WRITTEN DIMENSIONS ONLY.
 3. TRANSPORTATION BOLTS SHALL BE REMOVED AFTER INSTALLATION & PLACING OF GIRDERS ON BEARING.

GRADE OF CONCRETE:
FOR PEDESTAL : M50
SUPER STRUCTURE: STEEL

LEGEND

L--ALONG THE DIRECTION OF TRAFFIC MOVEMENT
T--PERPENDICULAR TO DIRECTION OF TRAFFIC MOVEMENT

REV	DESCRIPTION	DATE
RO	FIRST SUBMISSION	26-03-2025
REV	DETAILS	DATE

BBR (INDIA) PVT LTD.
BANGALORE

No.318, 1st & 2nd Floor, 15th CROSS 6th Main,
Sadashivanagar, BANGALORE-560 080, INDIA
PHONE:(080) 40250000, FAX: (080) 40250001

THIS DRAWING IS THE PROPERTY OF BBR (INDIA) PVT. LTD. AND
SHALL NOT BE COPIED/USED WITHOUT THEIR WRITTEN CONSENT.

PROJECT :

TITLE:

ASSEMBLY AND COMPONENT DRAWING OF
FIXED POT BEARING (FIX)

DRG. No.

DRAWN

DESIGNED

CHECKED KM

APPROVED KM

DATE

REV. RO

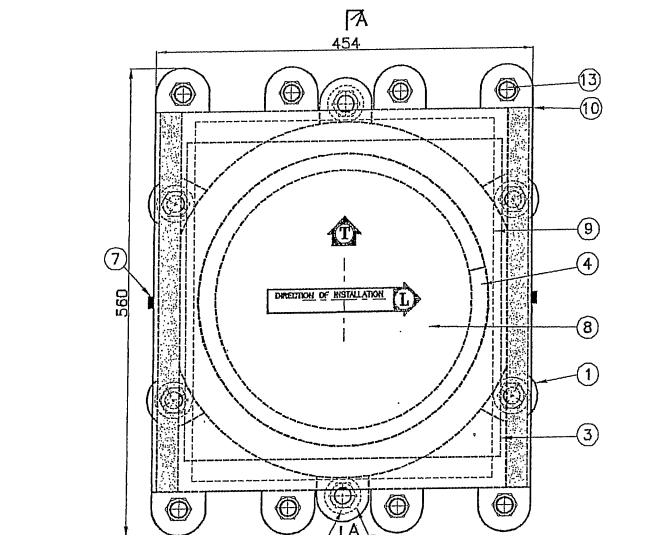
SCALE 1:7.5

TABLE AND LOADING MOVEMENT OF PTFE CUM POT BEARINGS

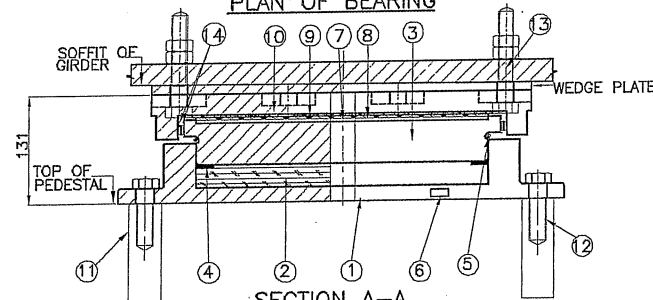
TABLE AND LOADING MOVEMENT OF PTFE CUM POT BEARINGS																												QTY								
BEARING IDENTIFICATION MARK/NUMBER	REF. DWG. NO.	DESIGN LOAD (TON)																DISPLACEMENT(mm)								ROTATION (RAD)										
		SLS						ULS(NORMAL)				ULS(WIND)				ULS(SEISMIC LONG.)				ULS (SEISMIC TRANS.)				SLS					ULS				SLS			
		VERTICAL			HORIZONTAL			VERTICAL		HORIZONTAL		VERTICAL		HORIZONTAL		VERTICAL		HORIZONTAL		VERTICAL		HORIZONTAL		IRREVERSIBLE		REVERSIBLE			IRREVERSIBLE		REVERSIBLE		IRREVERSIBLE		REVERSIBLE	
		MAX.	PERM.	MIN.	TRANS.	LONG.	MAX.	MIN.	TRANS.	LONG.	MAX.	MIN.	TRANS.	LONG.	MAX.	MIN.	TRANS.	LONG.	MAX.	MIN.	TRANS.	LONG.	MAX.	MIN.	TRANS.	LONG.	TRANS.		LONG.	TRANS.	LONG.	TRANS.	LONG.	TRANS.	LONG.	
<div>↑</div> <div>↓</div>	DDC-EMRCL-PH2A&2B-S2-P3-VA-HBRKA-DD-DWG-405017	260	175	167	26	41	364	224	36	72	388	200	39	72	286	216	29	50	286	216	29	33	2	0	5	0	3	0	7	0	0.011	0.011	0.011	0.011	3	
	DDC-EMRCL-PH2A&2B-S2-P3-HBRKA-VA-DD-DWG-403002A	305	215	148	31	43	425	200	43	75	449	176	45	75	337	192	34	66	337	192	34	39	2	0	5	0	3	0	7	0	0.012	0.012	0.012	0.012	2	
	DDC-EMRCL-PH2A&2B-S2-P3-HBRKA-VA-DD-DWG-403003A	305	215	148	31	43	425	200	43	75	449	176	45	75	337	192	34	66	337	192	34	39	2	0	5	0	3	0	7	0	0.012	0.012	0.012	0.012	2	
	ALPHA	DDC-EMRCL-PH2A&2B-S2-P3-HBRKA-VA-DD-DWG-403003A	305	215	148	31	43	425	200	43	75	449	176	45	75	337	192	34	66	337	192	34	39	2	0	5	0	3	0	7	0	0.012	0.012	0.012	0.012	2
	DDC-EMRCL-PH2A&2B-S2-VA-HBRKA-DD-DWG-405002	285	190	197	29	31	404	269	40	54	427	247	43	54	315	261	31	46	315	261	31	31	1	0	2	0	2	0	3	0	0.012	0.012	0.012	0.012	2	
NOTES:																																				

NOTES:

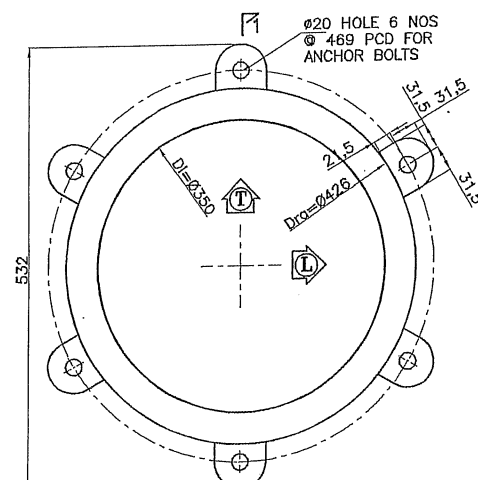
- 1 ACCEPTANCE SPECIFICATION AS PER IRC 83 PART III 2018, CL 7.1.
- 2 INSPECTION PROCEDURE AS PER CLAUSES 7.2 INSPECTION AND TESTING OF BEARING AS PER CLAUSE 7.2.1 TYPE TEST, WHICH INCLUDES INSPECTION & TESTING AS PER CLAUSES 7.4.2. AND 7.4.3. SHALL BE CARRIED OUT ON AT LEAST ONE BEARING OF EACH TYPE AND LOAD CAPACITY SELECTED AT RANDOM.
- 3 ROUTINE TEST AS PER CLAUSE 7.2.1.2.
- 4 RAW MATERIAL TEST
-RAW MATERIAL INSPECTION
-INSPECTION AND TESTING OF FINISHED BEARINGS
- 5 PROCESS INSPECTION AS PER CLAUSE 7.4.2.
- 6 INSPECTION OF FINISHED BEARINGS AS PER CLAUSE 7.4.3.1.
- 7 LOAD TEST ON BEARING AS PER CLAUSE 7.4.3.3.
-PROOF LOAD TEST AS PER CLAUSE 7.4.3.3.1.
-FRICTION TEST AS PER CLAUSE 7.4.3.3.2.
-ROTATION TEST AS PER CLAUSE 7.4.3.3.3.
- 8 VISUAL INSPECTION OF BEARING AFTER LOAD TEST AS PER CLAUSE 7.4.3.4.
- 9 TESTING OF PIN AND METALIC BEARING AS PER CLAUSE 7.4.3.5.
- 10 MANUFACTURING AS PER CLAUSE 6.1
MANUFACTURING TOLERANCES AS PER CLAUSE 6.1.1 TO 6.1.4.5.2
- 11 OVER ALL HEIGHT OF BEARING : 131 mm



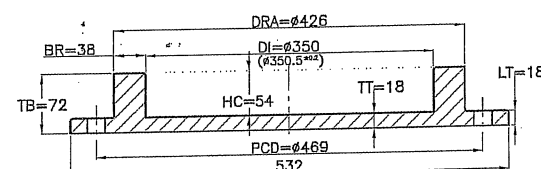
PLAN OF BEARING



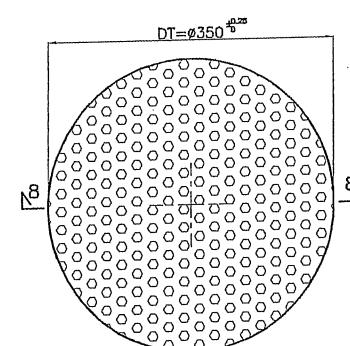
SECTION A-A
ASSEMBLY DRAWING



PLAN OF POT BOTTOM

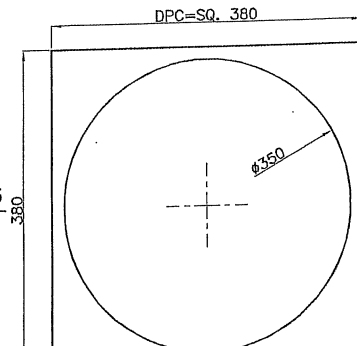


SECTION 1-1

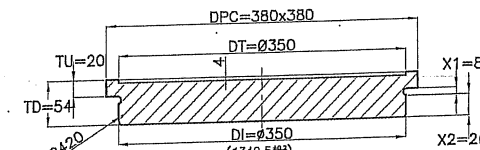


PLAN OF SLIDING MATERIAL
180Mpa

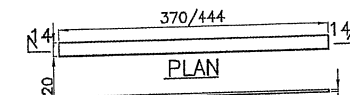
SECTION 8-8
POSITION No.8



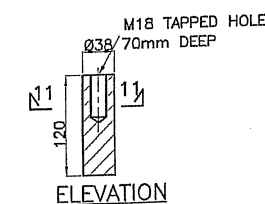
PLAN OF POT COVER



SECTION 3-3
POSITION No. 3



SECTION 14-14
STEEL STRIP
FOR GUIDE BAR & TOP COVER
POSITION No. 14



ELEVATION

SECTION 11-11
ANCHOR SLEEVE
POSITION No. 11



BILL OF QUANTITIES			
POS.NO.	DESCRIPTION	MATERIAL SPECIFICATION	QTY/SET
14	STEEL STRIP	AISI 316	2+2
13	CONNECTING BOLT(SLIDING PL)	M18x130 Long (Grade 8.8)	8
12	ANCHOR BOLT (POT BOTTOM)	M18x60 Long (Grade 8.8)	6
11	ANCHOR SLEEVE	E250 IS2062/EN8	6
10	SLIDING PLATE	CAST STEEL-1030 Gr340/570W	1
9	SLIDING SHEET	AISI -316	1
8	SLIDING MATERIAL	180 Mpa	1
7	TRANSPORTATION BOLTS	30x10mm THK. MS PL.	2
6	NAME PLATE	-	1
5	DUST SEAL	ELASTOMER	1
4	SEAL RING	BRASS	2 NOS.
3	POT COVER	IS2062 E350	1
2	ELASTOMER	IRC 83 PART III 2018	1
1	POT BOTTOM	CAST STEEL-1030 Gr340/570W	1

- NOTES:
1. ALL DIMENSIONS ARE IN MM.
 2. DO NOT SCALE THE DRAWING. FOLLOW WRITTEN DIMENSIONS ONLY.
 3. TRANSPORTATION BOLTS SHALL BE REMOVED AFTER INSTALLATION & PLACING OF GIRDERS ON BEARING.

GRADE OF CONCRETE:
FOR PEDESTAL : M50
SUPER STRUCTURE: STEEL

LEGEND

L--ALONG THE DIRECTION OF TRAFFIC MOVEMENT
T--PERPENDICULAR TO DIRECTION OF TRAFFIC MOVEMENT

BBR (INDIA) PVT LTD.
BANGALORE

No.318, 1st & 2nd Floor,15th CROSS 8th Main,
Sadashivanagar, BANGALORE-560 080, INDIA
PHONE:(080) 40250000, FAX: (080) 40250001

THIS DRAWING IS THE PROPERTY OF BBR (INDIA) PVT. LTD. AND
SHALL NOT BE COPIED/USED WITHOUT THEIR WRITTEN CONSENT.

PROJECT :

TITLE: ASSEMBLY AND COMPONENT DRAWING OF
TRAVERSELY GUIDED POT BEARING (TG)

DRG. No.

DRAWN

DESIGNED

CHECKED KM

APPROVED KM

DATE

REV.

SCALE

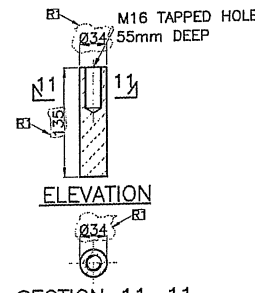
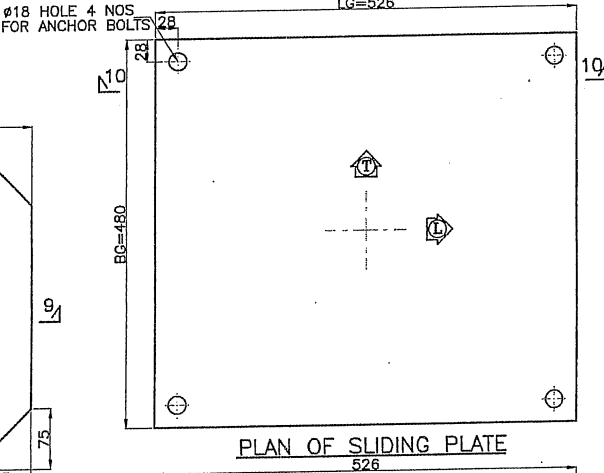
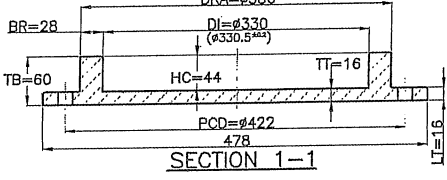
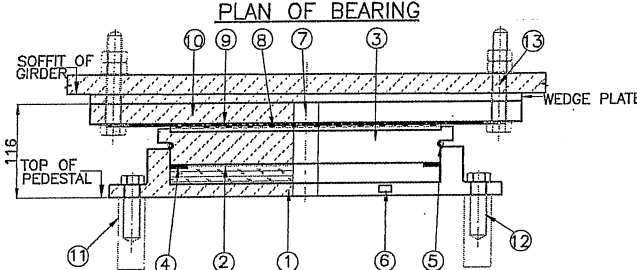
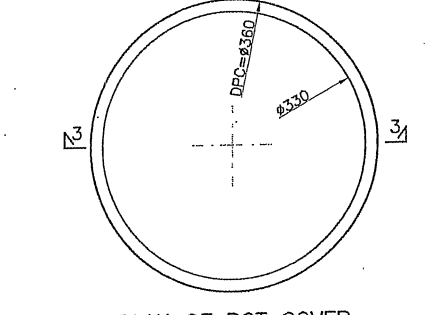
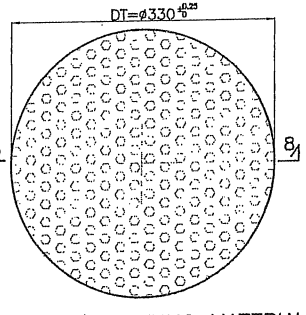
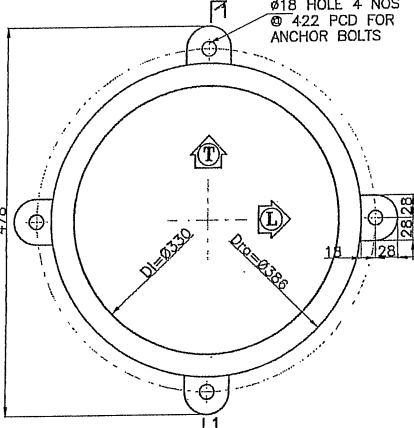
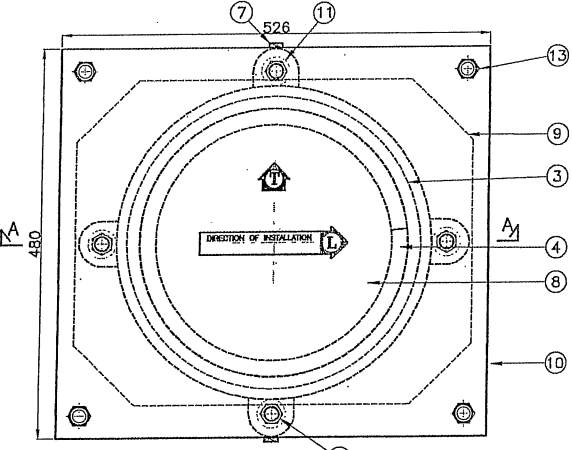
1:7.5

TABLE AND LOADING MOVEMENT OF PTFE CUM POT BEARINGS

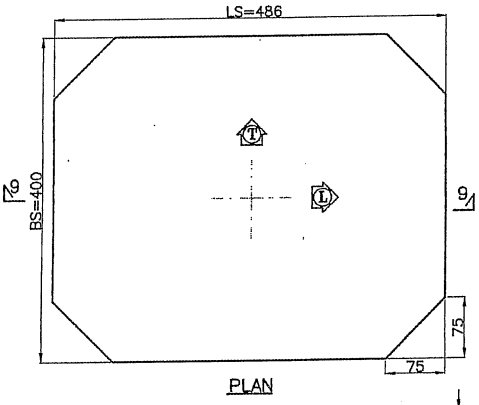
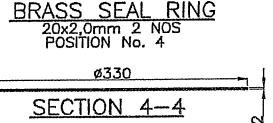
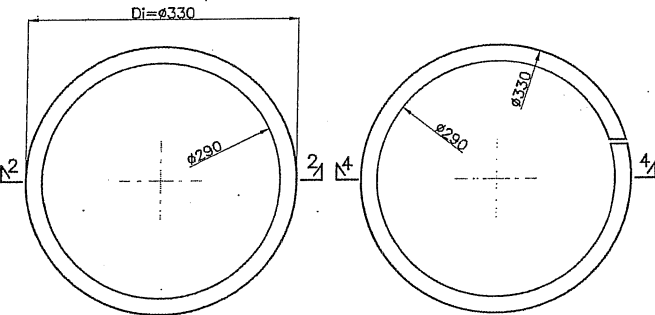
<div>BEARING IDENTIFICATION MARK/NUMBER</div>	REF. DWG. NO.	DESIGN LOAD (TON)																DISPLACEMENT(mm)								ROTATION (RAD)				QTY					
		SLS				ULS(NORMAL)				ULS(WIND)				ULS(SEISMIC LONG.)				ULS (SEISMIC TRANS.)				SLS				ULS					SLS				
		VERTICAL		HORIZONTAL		VERTICAL		HORIZONTAL		VERTICAL		HORIZONTAL		VERTICAL		HORIZONTAL		IRREVERSIBLE		REVERSIBLE		IRREVERSIBLE		REVERSIBLE		IRREVERSIBLE		REVERSIBLE							
		MAX.	PERM.	MIN.	TRANS.	LONG.	MAX.	MIN.	TRANS.	LONG.	MAX.	MIN.	TRANS.	LONG.	MAX.	MIN.	TRANS.	LONG.	TRANS.	LONG.	TRANS.	LONG.	TRANS.	LONG.	TRANS.	LONG.	TRANS.	LONG.	TRANS.		LONG.				
<div>FB</div>		260	175	167	26	26	364	224	36	39	388	200	39	36	286	216	29	29	286	216	29	29	2	11	5	24	3	17	7	37	0.011	0.011	0.011	0.011	3
<div>↑ ↓</div>																		NOTES:																	

NOTES:

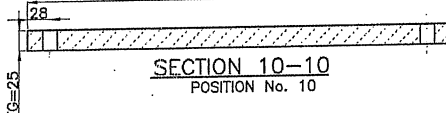
- 1 ACCEPTANCE SPECIFICATION AS PER IRC 83 PART III 2018, CL 7.1.
- 2 INSPECTION PROCEDURE AS PER CLAUSES 7.2 INSPECTION AND TESTING OF BEARING AS PER CLAUSE 7.2.1 TYPE TEST, WHICH INCLUDES INSPECTION & TESTING AS PER CLAUSES 7.4.2 AND 7.4.3. SHALL BE CARRIED OUT ON AT LEAST ONE BEARING OF EACH TYPE AND LOAD CAPACITY SELECTED AT RANDOM.
- 3 ROUTINE TEST AS PER CLAUSE 7.2.1.2.
- 4 RAW MATERIAL TEST
-RAW MATERIAL INSPECTION
-INSPECTION AND TESTING OF FINISHED BEARINGS
- 5 PROCESS INSPECTION AS PER CLAUSE 7.4.2.
- 6 INSPECTION OF FINISHED BEARINGS AS PER CLAUSE 7.4.3.1.
- 7 LOAD TEST ON BEARING AS PER CLAUSE 7.4.3.1.
-PROOF LOAD TEST AS PER CLAUSE 7.4.3.1.3.
-FRICTION TEST AS PER CLAUSE 7.4.3.2.
-ROTATION TEST AS PER CLAUSE 7.4.3.3.
- 8 VISUAL INSPECTION OF BEARING AFTER LOAD TEST AS PER CLAUSE 7.4.3.4.
- 9 TESTING OF PIN AND METALIC BEARING AS PER CLAUSE 7.4.3.5.
- 10 MANUFACTURING AS PER CLAUSE 6.1
MANUFACTURING TOLERANCES AS PER CLAUSE 6.1.1 TO 6.1.4.5.2
- 11 OVER ALL HEIGHT OF BEARING : 116 mm



SECTION 11-11
ANCHOR SLEEVE
POSITION No. 11



SECTION 9-9
POSITION No. 9
DETAIL OF STAINLESS
STEEL PLATE



BILL OF QUANTITIES				
POS.NO.	DESCRIPTION	MATERIAL SPECIFICATION	QTY/SET	
13	CONNECTING BOLT(SLIDING PL)	M16x130 Long (Grade 8.8)	4	
12	ANCHOR BOLT (POT BOTTOM)	M16x64 Long (Grade 8.8)	4	
11	ANCHOR SLEEVE	E250 IS2062/EN8	4	
10	SLIDING PLATE	IS2062 E350	1	
9	SLIDING SHEET	AISI -316	1	
8	SLIDING MATERIAL	180 Mpa	1	
7	TRANSPORTATION BOLTS	30x10mm THK. MS PL.	2	
6	NAME PLATE	-	1	
5	DUST SEAL	ELASTOMER	1	
4	SEAL RING	BRASS	2 NOS.	
3	POT COVER	IS2062 E350	1	
2	ELASTOMER	IRC 83 PART III 2018	1	
1	POT BOTTOM	CAST STEEL-1030 Gr340/570W	1	



- NOTES:
1. ALL DIMENSIONS ARE IN MM.
 2. DO NOT SCALE THE DRAWING. FOLLOW WRITTEN DIMENSIONS ONLY.
 3. TRANSPORTATION BOLTS SHALL BE REMOVED AFTER INSTALLATION & PLACING OF GIRDERS ON BEARING.

GRADE OF CONCRETE:
FOR PEDESTAL : M50
SUPER STRUCTURE: STEEL

LEGEND

L-ALONG THE DIRECTION OF TRAFFIC MOVEMENT

T-PERPENDICULAR TO DIRECTION OF TRAFFIC MOVEMENT

REV	DETAILS	DATE
R2	REVISED AS PER BMRL COMMENTS DT:14-07-2025	31-07-2025
R1	ANCHOR SLEEVE DIMENSION UPDATED	07-08-2025
R0	FIRST SUBMISSION	26-03-2025

BBR (INDIA) PVT LTD.
BANGALORE

No.318, 1st & 2nd Floor,15th CROSS 6th Main,
Sadashivanagar, BANGALORE-560 080, INDIA
PHONE:(080) 40250000, FAX: (080) 40250001

THIS DRAWING IS THE PROPERTY OF BBR (INDIA) PVT. LTD. AND
SHALL NOT BE COPIED/USED WITHOUT THEIR WRITTEN CONSENT.

PROJECT :		DRAWN	
TITLE: ASSEMBLY AND COMPONENT DRAWING OF FREE POT BEARING (FB)		DESIGNED	
		CHECKED	KM
		APPROVED	KM
		DATE	
DRG. No.		REV.	R2
		SCALE	1:7.5